

MATERIALS FOR CLASS

This page and the next one are all you really need for the class. The remaining pages comprise a rather complete list for basic painting and drawing materials in case you want my recommendations. For those of you who have already painted you can certainly start off with what you have.

You can add other materials as you need. For those of you who haven't painted I strongly recommend starting with oils.

A. Drawing Materials for Day 1

1. Newsprint pad (18 x 24) or other sketch paper at least 12 x 16.
2. 18x24 masonite or lightweight board without attached clips
3. Clips to hold pad or paper to board
4. Soft VINE Charcoal
5. Soft Pencil (2b 4b or 6b or ebony)
6. Eraser (kneaded or vinyl or pink pearl)
7. Soft Cotton Rag or Chamois
8. An old credit card or six inch ruler as a straight edge.

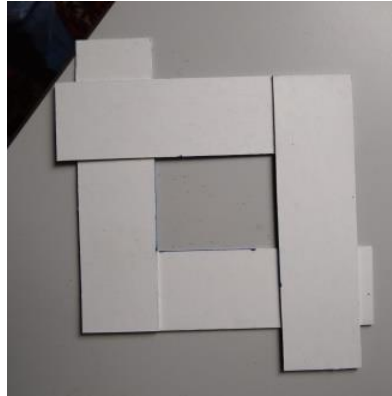
Painting Materials are on the next page

Painting Materials

1. Oil or Acrylic Paint (artist quality). We will start with white (large tube), ultramarine blue, and burnt sienna. For oils, Utrecht and Gamblin and Winsor Newton make good artist quality paint which is moderately priced. Graham is also good and the Daler Rowney Georgian line can be decent as well. For acrylic I think Golden is best.
2. Later you can add permanent alizarin crimson (or quinacridone magenta), cadmium red light (or pyrrole red or naphthol red lt), and cadmium yellow lt (or hansa yellow lt or azo yellow). No two artists seem to use the same preferred list of colors.
3. Still later, other colors (like phthalo green and cobalt teal) can be added.
4. Just a few long handled brushes (none less than ½ inch wide). Either hog hair or synthetic sable.
5. FOR OIL: Gamsol (odorless mineral spirits), and a small jar to hold it OR a brushwasher container. FOR ACRYLIC you'll need instead a 1 quart water container and spray atomizer bottle like the little ones used for spraying hand sanitizer..
6. Palette knife. Knives with a bend between the handle and blade are best. Only consider knives with metal blades
7. Jar or brush washing container for gamsol (see photo later in this document).
8. Palette: Pad of 12x16 Palette Paper or multiple sheets of Freezer paper cut to about 12 x 15 inches stacked and stapled to cardboard with the shiny side up
9. Surfaces to paint on – 9x12 and up to around 16x20 (canvas pad, Arches oil painting paper, stretched canvas, Masonite coated with acrylic gesso etc. OR Heavy (>100 lb) decent quality paper (such as Bristol board) lightly coated with acrylic medium. Just wipe a couple of coats of the acrylic medium on with a damp sponge.
10. Soft cotton rags (or paper towels if you insist). The good things about rags is that they can also be a painting tool.
11. Pizza box(es) to carry home wet painting(s).

B. Helpful tools

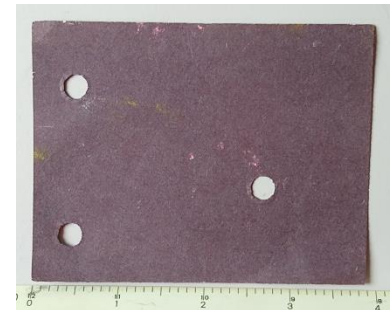
1. Adjustable Viewcatcher viewfinder OR (you can make it yourself from 4 pieces of 1 ½ in x 6 ½ inch matboard pieces glued as two right angle pieces.) Do a good job on getting the right angles. The last page will help you set the opening to standard proportions.



2. Bamboo skewer or knitting needle for visual measurement
3. Optional but nice: A piece of transparent plastic (like plexiglass from an old picture frame) about 5x7 inches



4. An old credit card or 6 inch ruler as a straightedge.
5. A piece of dark paper about 4 x 3 inches with three holes punched in it to compare values.



C. Drawing Materials

1. Newsprint pad (18 x 24) or other sketch paper at least 12 x 16.
2. 18x24 masonite or lightweight board without attached clips
3. Clips to hold pad or paper to board
4. Soft VINE Charcoal
5. Soft Pencil (2b 4b or 6b or ebony)
6. Eraser (kneaded or vinyl or pink pearl)
7. Soft Cotton Rag or Chamois
8. Optional: compressed charcoal....very soft and dark
9. Any other black and white medium you might like

D. Painting Materials

- Oil or Acrylic Paint (artist quality) white, ultramarine blue, burnt sienna, cad red 1t (or naphthol red 1t or pyrrole red), perm aliz crimson (or quinacridone magenta), cad yellow 1t (or hansa yellow 1t or azo yellow). Later you might want to add phthalo green (or viridian) and a light blue like cobalt teal.
- Long handled brushes (no less than ½ inch wide) and palette knife. Knives with a bend between the handle and blade are best. Only consider flexible metal blades such as those pictured here.
- Acrylic Matte or Gloss Medium can be used to prepare heavy paper surfaces for painting in oil or acrylic.
- * I prefer oil, but if using acrylic I recommend heavy body over the open acrylics. Fluid acrylics and acrylic gouache are fine if you are used to them already



D. Palette, Rags and Surfaces to Paint on

- Flat Palette (without indentations to mix in)
 - Glass, wood or plastic palette at least 12 x 16
 - or.. Pad of 12x16 Palette Paper
 - or Freezer paper – best to have many sheets about 12 x 15 inches stacked and stapled to cardboard with the shiny side up.
- Surfaces to paint on – 9x12 and up to around 16x20 (canvas pad, arches oil painting paper, stretched canvas, Masonite coated with acrylic gesso etc. Heavy (100 lb) decent quality paper (such as Bristol board) lightly coated with acrylic medium also works well for both oil and acrylic. Just wipe a couple of coats of the acrylic medium on with a damp sponge or rag.
- Soft cotton rags (or paper towels if you insist). The good things about rags is that they can also be a painting tool.



D. Solvents and Mediums

- For Oil only
 - Gamsol or odorless mineral spirits
 - Jar for the gamsol OR EVEN BETTER, this container:
https://www.amazon.com/Guerrilla-Painter-Stainless-Washer-Removable/dp/B00TV38PN6/ref=sxin_0_ac_d_pm?ac_md=3-2-QWJvdmUgJDI1-ac_d_pm&cv_ct_cx=brush+washer&dchild=1&keywords=brush+washer&pd_rd_i=B00TV38PN6&pd_rd_r=0e12256c-d60d-49a5-b2b0-da16b94b67d4&pd_rd_w=l4xro&pd_rd_wg=6lgdK&pf_rd_p=516e6e17-ed95-417b-b7a4-ad2c7b9cbae3&pf_rd_r=8N21Y1QZD47A07D3EB46&pssc=1&qid=1585421198&sr=1-3-22d05c05-1231-4126-b7c4-3e7a9c0027d0
 - No other oil painting medium is required.



Guerrilla Painter Plein Air 10oz
Stainless Steel Brush Washer with...

★★★★☆ ~ 55

\$28⁶⁹

- For acrylic only
 - 1 quart container for water
 - Fine spray bottle to keep paint moist
 - No other medium is required. (GOLDEN OPEN acrylic medium may be helpful for some of what we do and Acrylic Matte or Gloss medium is useful if you'd like to paint on Bristol board or other heavy weight paper. The medium makes the paper less absorbent.)

What you have already is probably fine but if you would like recommendations for easels and palette knives:

There are lots of styles of knives but don't get anything too small. Either one of these knives is fine for both mixing and painting.

<https://www.dickblick.com/items/03117-1063/>



<https://www.dickblick.com/items/03117-1006/>



This one is nice for mixing if you don't have a similar one already:

<https://www.dickblick.com/items/03117-1096/>



I think this easel is very decent for the price (\$59.00). It is black aluminum. It's easy to put away and take out and, when collapsed doesn't take up a lot of space. It does take up some floor space when set up.

<https://www.dickblick.com/products/blick-studio-aluminum-single-mast-easel/>

If you are interested in portable easel solutions for painting outdoors, let me know.

A Note on Brushes

A B C D E F



Brushes are a VERY personal matter and depend also on the size you are painting. To start with oils I recommend both synthetic sable brushes and natural hogs hair between $\frac{3}{8}$ and $\frac{3}{4}$ inches except for ROUNDS which could be as small as $\frac{1}{4}$ inch. For acrylics I prefer synthetic brushes. You can start with just 2 or 3 brushes and clean them as you work.

A ROUND is a pointy brush. A FLAT is like a BRIGHT with longer bristles. A FILBERT is like a FLAT but rounded at the top. An EGBERT is like a long FILBERT.

Size numbering is not necessarily consistent among manufacturers and brush types.

FYI this photo shows some brush types in a range of sizes. It will print a bit larger than life size. The verticals are $\frac{1}{2}$ inch spaces. My measurements are taken at the place where the bristles meet the metal ferrule.

- A. A small ROUND synthetic sable which is less than $\frac{3}{16}$ inches measured where the bristles join the metal. It is a #2.
- B. A synthetic sable BRIGHT which measures just a little over $\frac{1}{2}$ inch and is a #6.
- C. A well used hogs hair ROUND which measures about $\frac{3}{8}$ inches and is a # 8.
- D. A new synthetic FILBERT which measures almost $\frac{1}{2}$ inch as is a #14.
- E. A new EGBERT which measures about $\frac{3}{8}$ inches and is a #4.
- F. A well worn FLAT which measures about $\frac{5}{8}$ inches and is a #8.

